

Cat.6 patch cable ETHERNET network LS0H S/FTP white 15m

Product number CN-C6-150

Length 15000mm



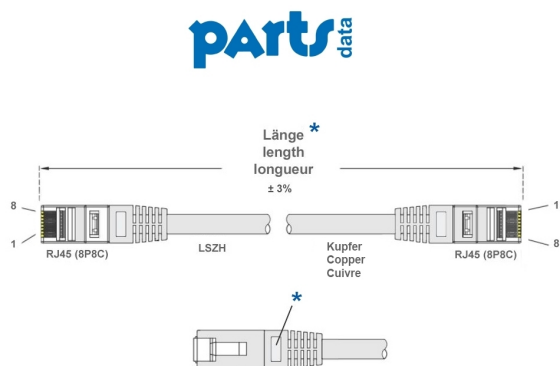
Product description

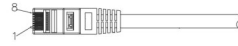
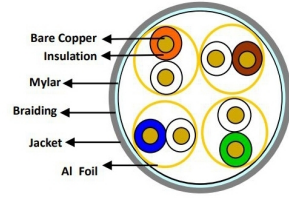
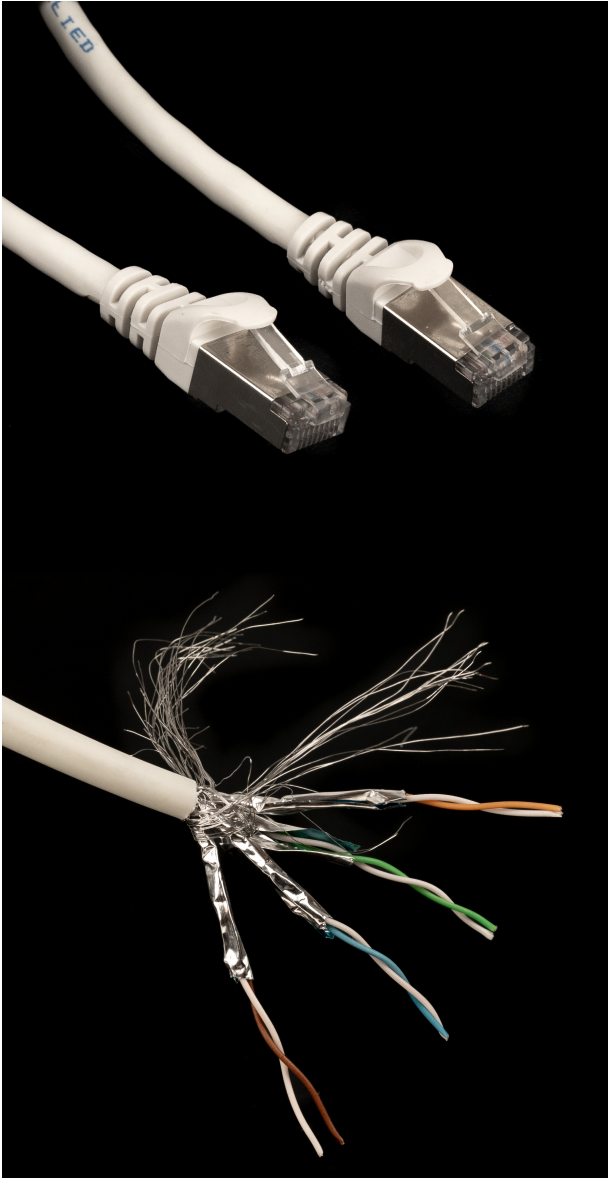
HIGH QUALITY Cat.6 ethernet patch cable 15m, 10/100/1000 MBps, 250 MHz, LSZH, S/FTP PIMF (pair in metal foil), 2x RJ45 plug

Key Features

- Cat.6 network cable / Ethernet cable / patch cable
- 2x RJ45 plug (8P8C, male) moulded in slim design
- PREMIUM quality
- 4 x 2 AWG 28/7 stranded bare copper conductors
- recommended for gigabit networks (1Gbit)
- suitable for PoE, PoE+
- 250 Mhz bandwidth
- double shielding: S/FTP (reduces EMI/RFI interference)
- details: overall braided shielding + PiMF (Pairs in Metal Foil)
- twisted pairs
- moulded bend protection
- good snap-in protection (permanently flexible)
- jacket: Low Smoke Zero Halogen (halogen-free/flame-retardant) | LSZH | LS0H
- 1:1 assignment of all 8 pins in accordance with EIA/TIA 568B
- 10/100/1000 MBit/s
- PVC jacket
- customs tariff no. 85444210
- colour: white
- CE, WEEE, RoHS compliant

More images





Pinout

CN1	COLOR	CN2
1	WHITE	1
2	ORANGE	2
3	WHITE	3
4	GREEN	6
5	BLUE	4
6	WHITE	5
7	WHITE	7
8	BROWN	8
SHELL	DRAIN	SHELL